



national treasury

Department:
National Treasury
REPUBLIC OF SOUTH AFRICA

Enquiries: Johnny Ramoroka

Ref RT70-2014 **Tel :** 012 395-6524 **Fax :** 086 232 5145
email: johnny.ramoroka@treasury.gov.za

ADDENDUM 117

RT70-2014: THE SUPPLY AND DELIVERY OF PETROL; AUTOMOTIVE DIESEL FUEL; ILLUMINATING PARAFIN; MARINE GAS OIL; HEAVY FURNACE OIL; POLAR DIESEL AND AVIATION FUEL TO THE STATE FOR THE PERIOD 1 FEBRUARY 2015 TO 31 JANUARY 2020

1. With regard to fuel price adjustments applicable to **WOA Fuels and Oils cc**, such should be handled according to the attached documents. Please note that the prices applicable for the month of **December 2015** (Effective: 2 December 2015 to 5 January 2016) must be paid according to annexure substantiating these contract prices as approved by the National Treasury.
2. Your co-operation will be highly appreciated.

*In the event that an incorrect price adjustment was made during the calculation of the contract price adjustment, the state reserves the right to adjust the price in accordance with the correct calculation. Recovery of any over or under payment as a result of the application of an incorrect price adjustment will be dealt with by the supplier and the relevant end-user department.

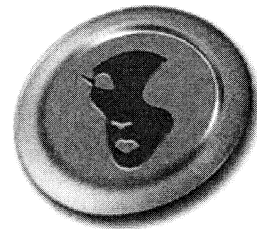
Please amend your records accordingly.

Yours faithfully


Sizi Qolohle

MEDICAL AND HEALTH TECHNOLOGY
for CHIEF DIRECTOR: TRANSVERSAL CONTRACTING

Date: 7/01/2016



WOA FUELS AND OILS

Attn : J Ramoroka

08th December 2015

National Treasury
Pretoria

Good day

RE Adjustment to fuel price – December 2015 – RT 70

This is to confirm that the December pricing on LRP 93 for zone 62 C is as follows;

Zone 62 C Commercial Price R 11.1220 less rebate of 25 cents which equates to R 10.8720.

Thank you

NS Maharaj

N S Maharaj

HEAD OFFICE

36 GLENEAGLES DRIVE, BROADWAY, DURBAN NORTH

TEL: + 27 31 563 0502

FAX + 27 31 563 0499

POSTAL ADDRESS

CLUSTER BOX 4792, LA LUCIA RIDGE, 4019

EMAIL INFO@WOAONLINE.COM WEB WWW.WOAONLINE.COM

COMPANY REGISTRATION NO : 2007/014796/23
